



More than you **IMAGINED**

In a home, builder and resort mountain community

Our unparalleled focus on our exceptional service is at the core of our business, as we bring your vision to life with beautiful, well-designed, carefully crafted spaces.

As a full-service, design-build contractor, Jacobs Construction has led the way in new mountain home construction for more than 40 years in the communities of Southern Utah.

Together it's a collaborative process that becomes a lasting relationship — and we take pride in our unprecedented level of quality and service in everything we do.



— experience —
mountain home luxury

DESIGN + BUILD + REMODEL

We are committed to building outstanding experiences and strong relationships with all of our clients while focusing on the highest-quality craftsmanship in the industry. We look forward to each new friend we make and relationships we build with each new project. You can feel confident in a design that is built to operate efficiently, and have built our reputation on the integrity of our finished product — focusing on superior design and building methods, cost efficiency, deliverable timelines and quality materials that create excellent durability and safety in our homes.



WE ARE NOT YOUR AVERAGE BUILDER.

From the beginning, it has been our mission to make the custom home-building experience more efficient, more transparent and more accurate. So we have streamlined the process by assembling our team of experts to help with every step — from designing to building to decorating your dream home, while integrating the latest in technology to give our clients access to their entire project..

Our clients are equipped with a secure online portal, making it easy to track your home's progress—at any time. That kind of accountability, coupled with expert project management and maximum buying power through our network of subcontractors and vendors, results in projects that come in on time, on budget and above expectations.. **If you've started planning your dream home, build with Jacobs.**



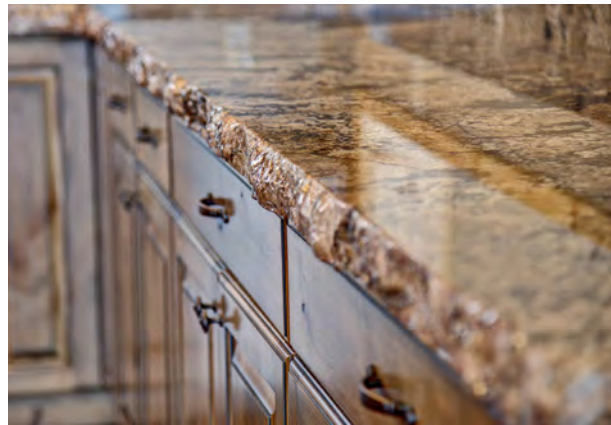
— expect **more** —
BUILD WITH JACOBS





It's all in the **DETAILS**

We use only the finest quality of materials and techniques to create your one-of-a-kind home. You have the ability to customize all of the details throughout the build process – from eclectic style lighting to custom mantles and countertops. Each decision you make helps form the unique surroundings that reflect your lifestyle turning your vision into reality.



designed for your **lifestyle**

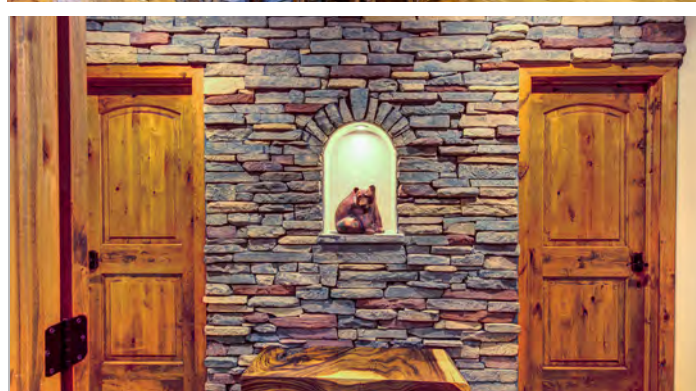
We are passionate about creating exceptional living environments that enhance our clients' lifestyles. The experience of crafting your home - a home that masterfully allows you to live your life in your own unique and personalized space—brings a satisfaction and contentment of the highest magnitude. The beautiful and quaint resort communities of Southern Utah inspire an environmentally rich approach to the design of your home – integrating the expansive, panoramic valleys and towering forests into the elements of your space to help create a natural blend of warmth and comfort into your home.



custom tailored to your own style

Inviting warmth, spacious beauty, elegant comfort — and the detail that goes into every Jacobs Construction home, makes it your own personal masterpiece that will welcome you home for years to come. Our innovative design and premium craftsmanship will ensure that your new home exceeds your expectations while we adhere to the predetermined budget and scope.

We work hard to bring our clients' vision to life with beautiful, well-designed spaces that shine with personality, reflect quality and craftsmanship, while bringing homeowners joy, comfort and peace of mind..





we build **more** than **HOMES**

Our impeccable craftsmanship and extensive knowledge does not stop at new custom homes — we design, customize and build every aspect of your home or ranch including outbuildings, structures, entrances, landscaping, garages, barns, ponds, fencing, asphalt and gravel driveways, fire mitigation and more. Complete custom outdoor living spaces that seamlessly blend with your new home is an exciting possibility to consider when planning your space, and we are just the builder to make it a reality.





— endless —
outdoor recreational opportunities



Cedar City and surrounding areas such as Duck Creek, Brian Head Ski Resort and Elk Ridge Community

Discover the four-season recreation in the beautiful mountains of Southern Utah and its premier resort communities. The resort community of Duck Creek Village, on Cedar Mountain near Brian Head Ski Resort and Cedar City, Utah, is surrounded by beautiful mountain scenery and offers a multitude of recreational activities for all seasons.





maintaining the comfort & value of your mountain home

HOME SERVICES + MAINTENANCE

Jacobs Construction Home Services (JCHS) provides a unique service by offering a comprehensive and preventative maintenance program to preserve and enhance the value, life and beauty of your mountain home. JCHS was founded to meet the needs of today's busy homeowner and provide our customers with the precious gift of extra time and peace of mind. By preparing for and keeping up with the necessary maintenance to your new home, you decrease the risk

of future issues that may occur. We also eliminate the headache of finding and contracting multiple vendors for the various tasks in post-construction maintenance, by being your one source for all your maintenance needs. We'd love to show you how our team of licensed professionals can become your trusted partner not only in the design and build of your home, but in all of your home's care and maintenance—just as we have been for many Duck Creek homeowners for over 30 years.

OUR PLANBOOK

We have been designing and developing our own plans for many years. This allows you to retain total creative control over your project, and also cut costs and wasted time. Because we design our own plans, making changes or drawing custom plans is no problem at all. In fact most revisions and drafts are done within a matter of hours. Let us show you the difference that a design/build company has to offer.

THE DAKOTA



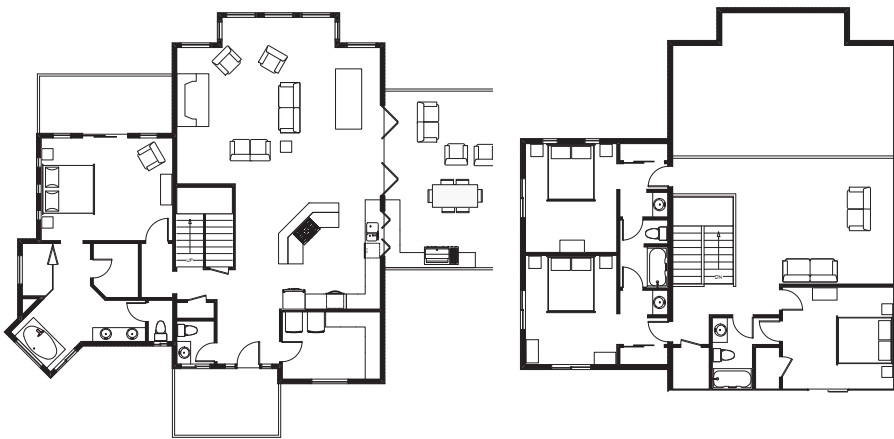
PLAN SPECS: AREA: 3081 SQ. FT. FLOORS: 2
BEDROOMS: 4
BATHROOMS: 3.5

Main Floor

AREA: 1856 sq. ft.

Upper Floor

AREA: 1225 sq. ft.



Custom entry truss, moving wall system, outdoor living area, outdoor kitchen, open living area, master suite w/ deck, open loft area, large view windows

THE ALPINE



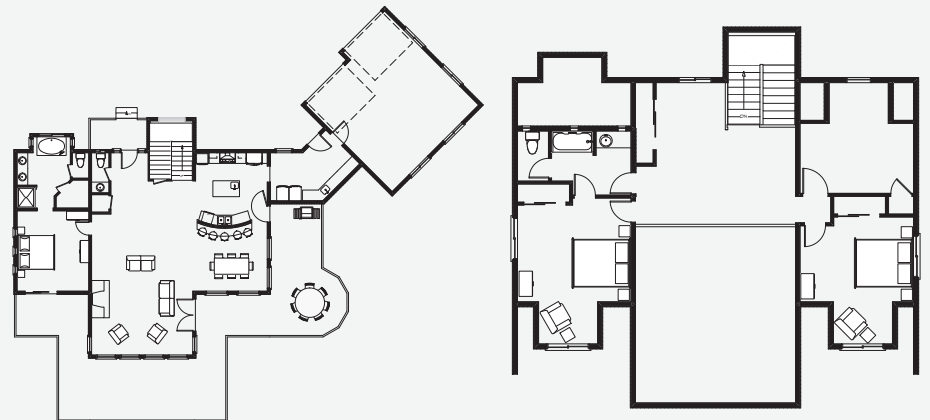
PLAN SPECS: AREA: 2677 SQ. FT. FLOORS: 2
BEDROOMS: 3 OR 4 GARAGES: 2
BATHROOMS: 2.5

Main Floor

AREA: 1614 sq. ft.

Upper Floor

AREA: 1063 sq. ft.



Cultured stone accents, expansive decks, 2-car garage, open floor plan, office or 4th bedroom, open view to below, large view windows

THE SEQUOIA



PLAN SPECS:

AREA: 2972 SQ. FT.
BEDROOMS: 3
BATHROOMS: 2.5

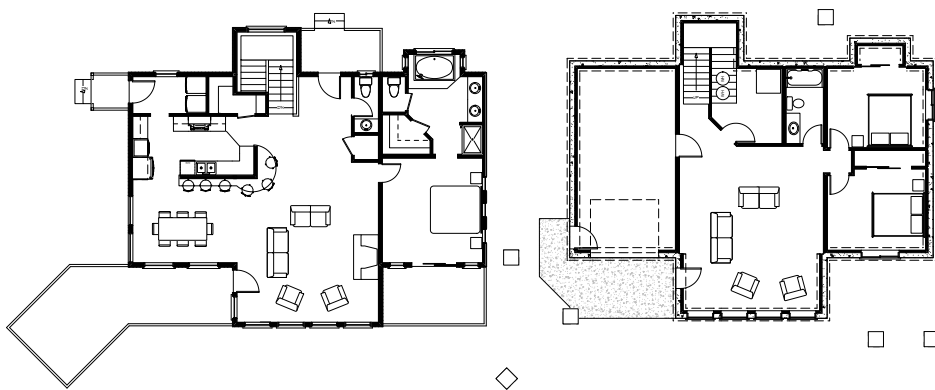
FLOORS: 2
GARAGE: 1

Main Floor

AREA: 1486 sq. ft.

Lower Floor

AREA: 1486 sq. ft.



Cultured stone accents, expansive decks, 1-car garage, open floor plan, unique kitchen design, large view windows, main floor master

THE FIR



PLAN SPECS:

AREA: 3340 SQ. FT.
BEDROOMS: 4
BATHROOMS: 3.5

FLOORS: 3
GARAGES: 1.5

Main Floor

AREA: 1436 sq. ft.

Upper Floor

AREA: 468 sq. ft.

Lower Floor

AREA: 1436 sq. ft.



Large family area, large decks, 1-car garage, open floor plan, concrete apron, open living area, large kitchen/dining, front porch + entry, master suite and powder room

THE QUAKY

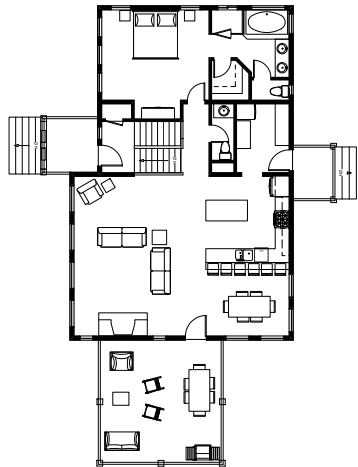


PLAN SPECS:

AREA: 2880 SQ. FT. BATHROOMS: 2.5
BEDROOMS: 3 FLOORS: 2

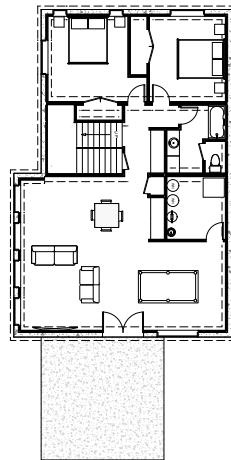
Main Floor

AREA: 1440 sq. ft.



Lower Floor

AREA: 1440 sq. ft.



Custom entry truss, open living area, master suite, mudroom, large covered deck, large open family room

THE SPRUCE

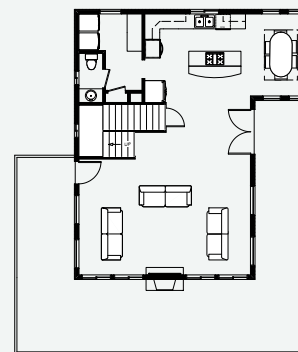


PLAN SPECS:

AREA: 2398 SQ. FT. FLOORS: 3
BEDROOMS: 3 GARAGES: 1
BATHROOMS: 2.5

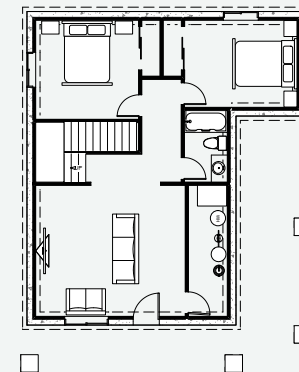
Main Floor

AREA: 960 sq. ft.



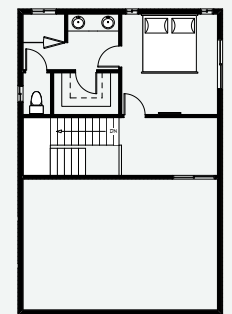
Lower Floor

AREA: 960 sq. ft.



Upper Floor

AREA: 478 sq. ft.



Open living areas, covered porches, open sun deck, master suite, open loft area, family room or garage

THE CYPRESS



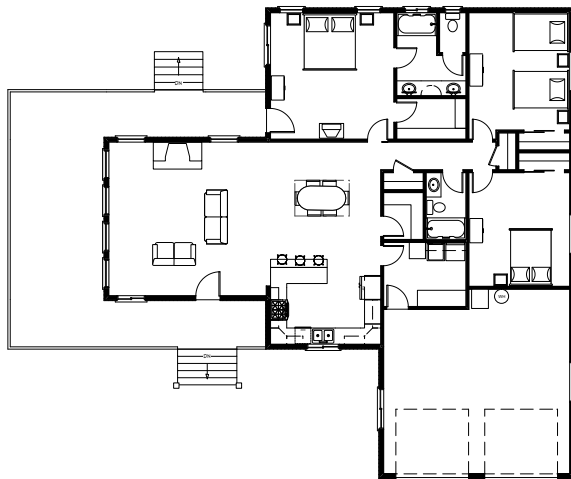
PLAN SPECS:

AREA: 1840 SQ. FT.
BEDROOMS: 3

BATHROOMS: 2
GARAGES: 2

Main Floor

AREA: 1840 sq. ft.



Custom entry truss, open living area, master suite, mudroom, wrap-around covered decks, large view windows

THE TRAILSIDE



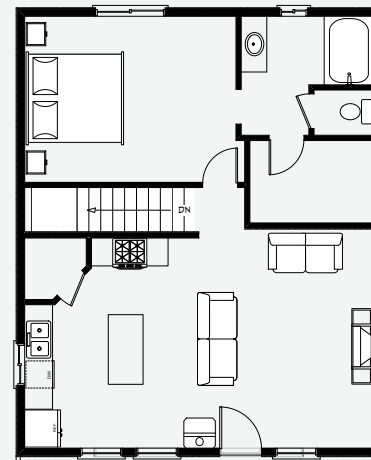
PLAN SPECS:

AREA: 1644 SQ. FT.
BEDROOMS: 2
BATHROOMS: 2

FLOORS: 2
GARAGES: 1

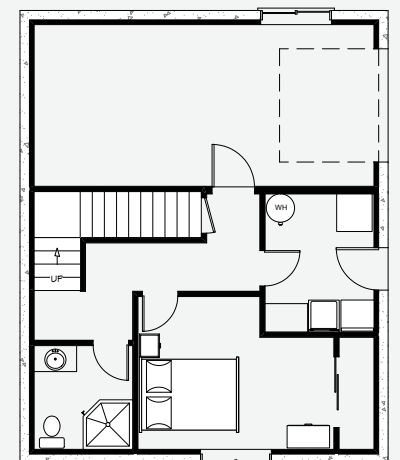
Main Floor

AREA: 832 sq. ft.



Lower Floor

AREA: 832 sq. ft.



Open living areas, covered porches, master suite, open loft area, wood stove, mudroom

THE PONDEROSA



PLAN SPECS:

AREA: 2872 SQ. FT.
BEDROOMS: 3
BATHROOMS: 2.5

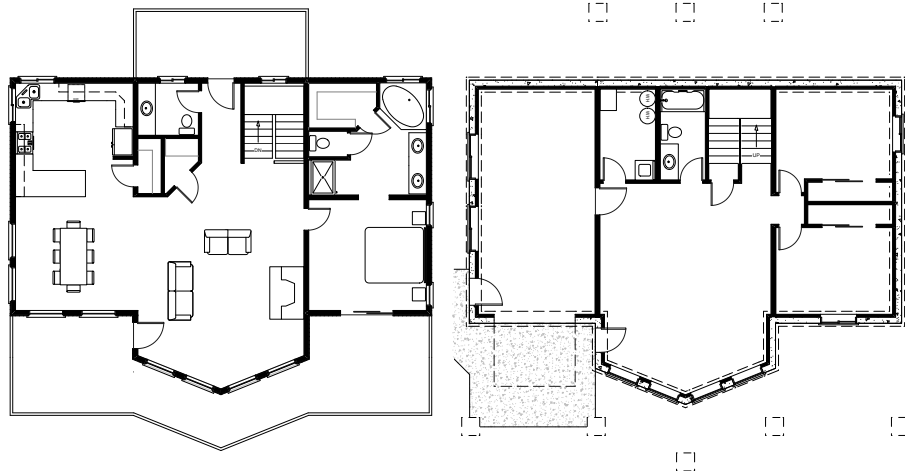
FLOORS: 2
GARAGE: 1

Main Floor

AREA: 1436 sq. ft.

Lower Floor

AREA: 1436 sq. ft.



Open living area, large kitchen, master suite, powder room, large decks + front porch, family area, 1-car garage, laundry/utility room

THE ENGLEMAN



PLAN SPECS:

AREA: 3280 SQ. FT.
BEDROOMS: 5
BATHROOMS: 3

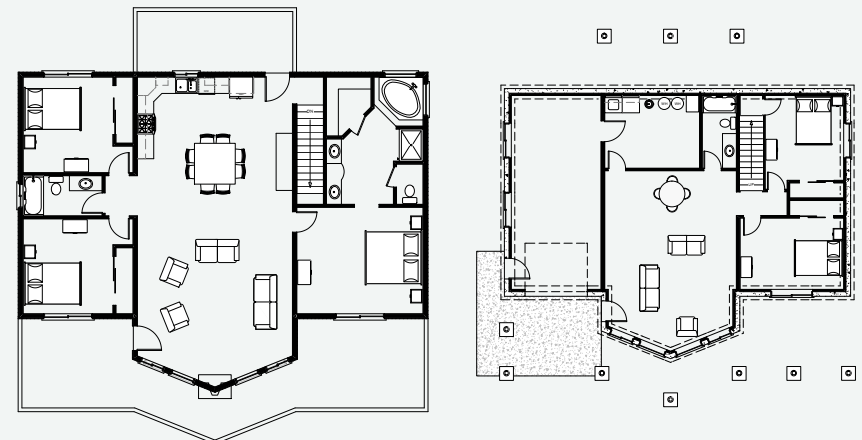
FLOORS: 2
GARAGES: 1

Main Floor

AREA: 1640 sq. ft.

Lower Floor

AREA: 1640 sq. ft.



Open living area, eat-in kitchen, master suite, guest bedroom, large decks + front porch, large family area, 1-car garage, laundry/utility room

THE ASPEN



PLAN SPECS:

AREA: 3081 SQ. FT.
BEDROOMS: 4
BATHROOMS: 3.5

FLOORS: 2
GARAGES: 1

Main Floor

AREA: 1015 sq. ft.

Upper Floor

AREA: 526 sq. ft.

Lower Floor

AREA: 1015 sq. ft.



Master Suite, open loft to below, full 1-car garage, open floor plan, wrap around decks, mudroom

THE COTTONWOOD



PLAN SPECS:

AREA: 2192 SQ. FT.
BEDROOMS: 3
BATHROOMS: 2.5

FLOORS: 3
GARAGES: 1+

Main Floor

AREA: 864 sq. ft.

Upper Floor

AREA: 560 sq. ft.

Lower Floor

AREA: 768 sq. ft.



open living areas, loft open to below, dining popout, covered porches, open sun deck, 1-car garage + workshop/customizable

THE PINYON



PLAN SPECS:

AREA: 2304 SQ. FT.
BEDROOMS: 3
BATHROOMS: 2.75

FLOORS: 3
GARAGES: 1

Main Floor

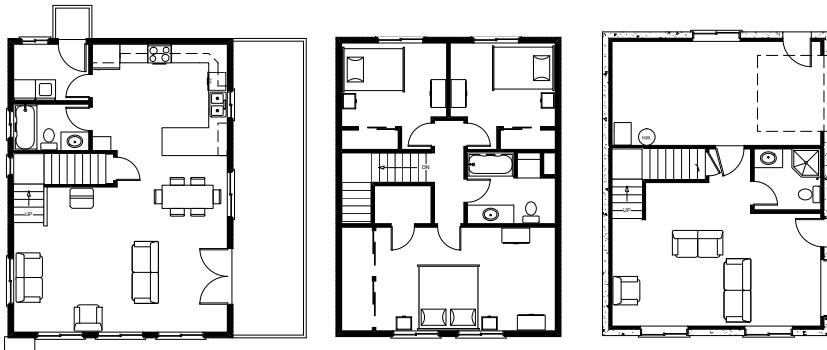
AREA: 768 sq. ft.

Upper Floor

AREA: 768 sq. ft.

Lower Floor

AREA: 768 sq. ft.



open living area, covered porch, mudroom, full bathroom, garage family room

THE OAK



PLAN SPECS:

AREA: 1536 SQ. FT.
BEDROOMS: 3
BATHROOMS: 2

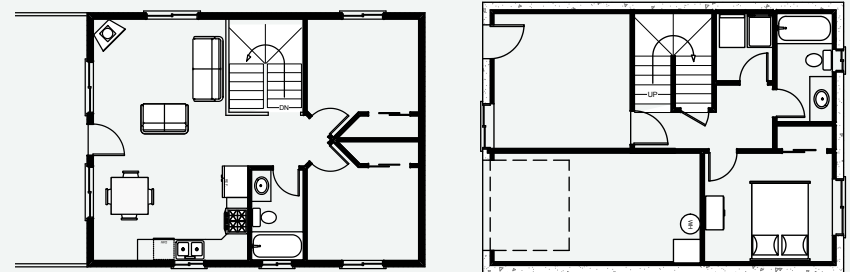
FLOORS: 2
GARAGES: 1

Main Floor

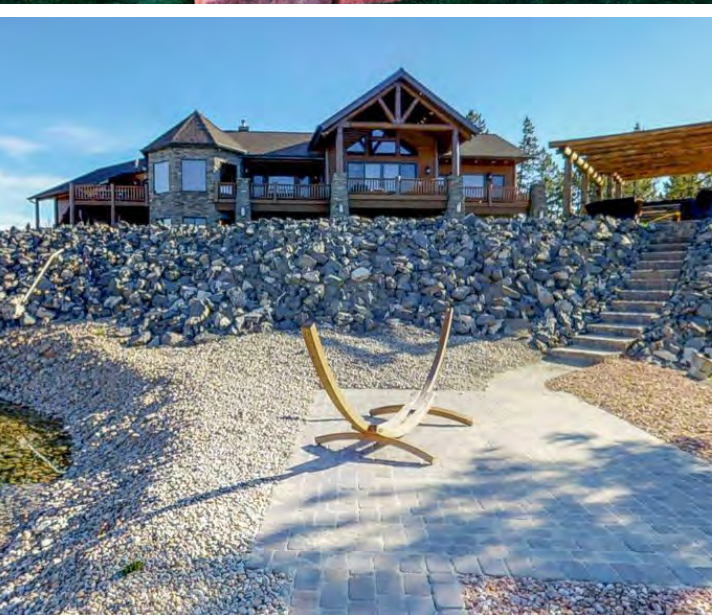
AREA: 768 sq. ft.

Lower Floor

AREA: 768 sq. ft.

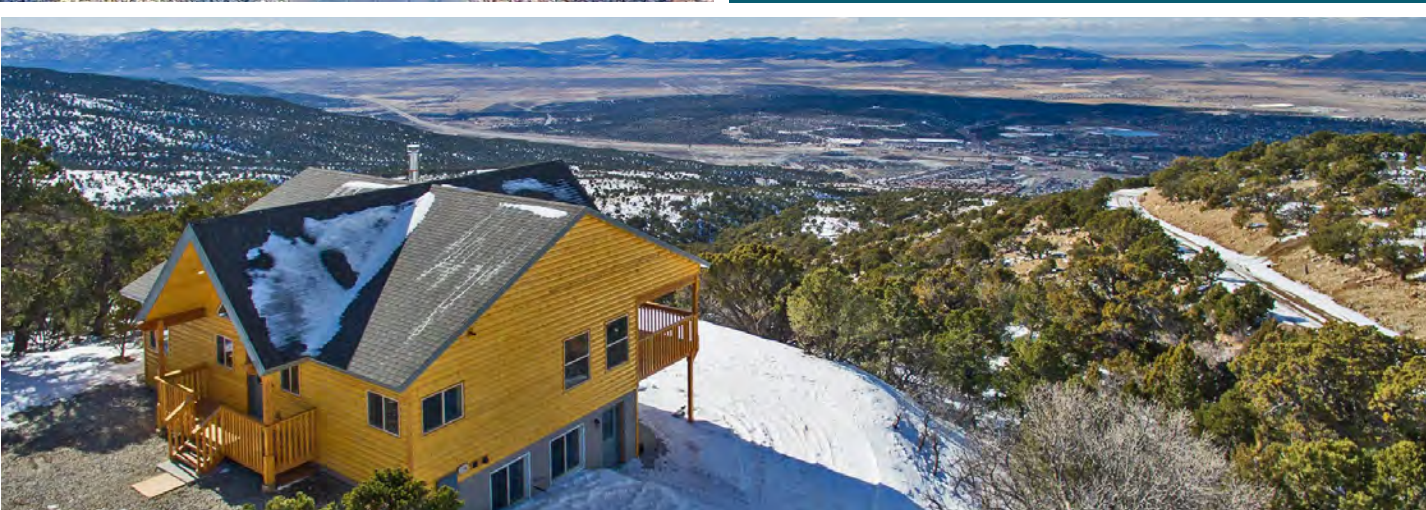


Open living areas, covered porch, private bedroom, 1/2 car garage or workshop



Jacobs builds magnificent homes that suit your needs and your lifestyle and embody all that the natural surroundings have to offer in Southern Utah. We offer more than just an amazing custom-built home in the mountains... we create an exceptional experience and friendships while creating it.

BUILD WITH JACOBS.





Jacobs Construction Inc. | 1416 West Highway 14 | Duck Creek Village, UT 84762
Phone: 435.648.3318 | www.jacobsconstruction.com